

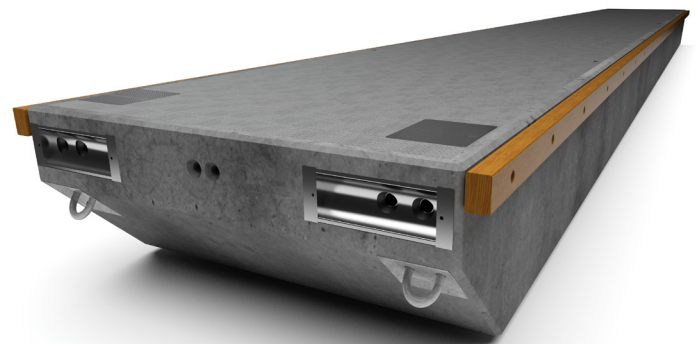
CONCRETE PONTON

TYPE SF1000



An all-concrete pontoon from SF MARINA provides the highest possible standard and comfort. The heavy weight makes it extremely stable and low centre of gravity. As a result of the use of high quality materials, coupled with a thorough manufacturing process, the pontoon enjoys a long life-span. The pontoon is built to cope with our Scandinavian climate and to withstand the autumn hurricanes and harsh winters. Type SF 1000 can be used universally in sheltered and semi-sheltered locations where there is a requirement for high quality and stability.

The pontoon also has good wave-dampening characteristics. The all concrete and styrofoam design of the pontoon produces a very high degree of buoyancy. It is practically maintenance-free and has little or no impact upon Nature and the Environment. Each standard pontoon is designed to accept electrical and water supply services. Normally, the pontoons would be moored using chains and blocks. As an alternative, they could be moored to piles. With our patented connector system the pontoons can be connected longitudinally and at angles without the necessity of intermediate gangways.



SPECIFICATIONS

The pontoon is manufactured in accordance with the Swedish Concrete Standards BBK 04

| SF 1024 | SF 1030 | SF 1040 | SF 1050 |
|---|---|---|---|
| Length: 9.95, 11.96, 14.96, 19.96, 24.96m | Length: 9.95, 11.96, 14.96, 19.96, 24.96m | Length: 9.95, 11.96, 14.96, 19.96, 24.96 m | Length: 9.95, 11.96, 14.96, 19.96, 24.96 m |
| Width: Incl. fender 2.65 m Width: Excl. fender 2.4 m | Width: Incl. fender 3.25 m Width: Excl. fender 3.0 m | Width: Incl. fender 4.25 m Width: Excl. fender 4.0 m | Width: Incl. fender 5.25 m Width: Excl. fender 5.0 m |
| Height: 1.0 m | Height: 1.0 m | Height: 1.0 m | Height: 1.0 m |
| Weight: Approx. 12.0, 14.0, 18.0, 24.0, 30.0 tons | Weight: Approx. 14.0, 17.0, 22.0, 28.0, 37.4 tons | Weight: Approx. 18.0, 22.0, 28.0, 38.0, 49.9 tons | Weight: Approx. 24.9, 29.9, 37.4, 49.9, 62.4 tons |
| Freeboard: Approx. 0.45-0.5 m | Freeboard: Approx. 0.5 m | Freeboard: Approx. 0.5 m | Freeboard: Approx. 0.5 m |
| Buoyancy: Approx. 500kg/m ² | Buoyancy: Approx. 500kg/m ² | Buoyancy: Approx. 500kg/m ² | Buoyancy: Approx. 500kg/m ² |
| Connectors: 2 units type W 200/300 per joint | Connectors: 2 units type W 200/300 per joint | Connectors: 2 units W 200/300 per joint | Connectors: 2 units W 200/300 per joint |
| Breaking load: W 200: 2 x 33 tons per joint | Breaking load: W 200: 2 x 33 tons per joint | Breaking load: W 200: 2 x 33 tons per joint | Breaking load: W 200: 2 x 33 tons per joint |
| Breaking load: W 300: 2 x 33 tons per joint | Breaking load: W 300: 2 x 66 tons per joint | Breaking load: W 300: 2 x 66 tons per joint | Breaking load: W 300: 2 x 66 tons per joint |

All-concrete pontoons: Concrete: C40/50. Air 6%. Wcr < 0.4. Reinforcement: Nps 500, Ks 500, B500BT. Styrofoam: min. 60kPa.
Cast-in materials: Stainless or hot-dipped galvanised steel. Wood fender: Pressure-treated pine 95 x 145 mm.

Other dimensions can be offered upon request. We reserve the right to change the design without notifying.