

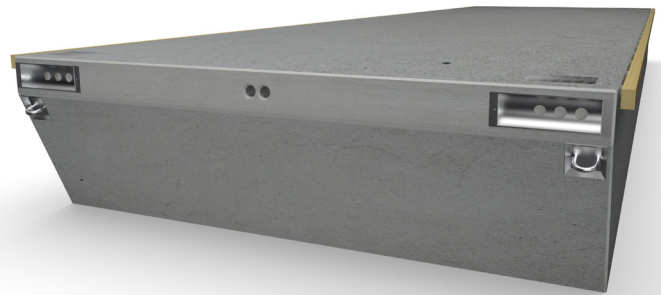
# CONCRETE PONTON

## TYPE SF1800



An all-concrete pontoon from SF MARINA provides the highest possible standard and comfort. The heavy weight makes it extremely stable and low centre of gravity. As a result of the use of high quality materials, coupled with a thorough manufacturing process, the pontoon enjoys a long life-span. The pontoon is built to cope with Scandinavian climate and to withstand the autumn hurricanes and harsh winters. Type SF 1800 can be used universally where the potential of heavy duty pontoon with very high freeboard, approx. 1.0 m. can be utilized, such as commercial docks, fishing harbours, ferrylandings etc.

The pontoon also has good wave-dampening characteristics. The all concrete and styrofoam construction of the pontoon results in a very high degree of buoyancy thus making it virtually unsinkable. It is practically maintenance-free and has little or no impact upon Nature and the Environment. Each standard pontoon is designed to accept electrical and water supply services. Normally, the pontoons would be moored using chains and blocks. As an alternative, they could be connected to piles. With our patented connector the pontoons can be connected longitudinally and at angles without the necessity of intermediate gangways.



### SPECIFICATIONS

The pontoon is manufactured in accordance with the Swedish Concrete Standards BBK 04

SF 1850	SF 1860	SF 1880
Length: 10, 12,15, 20, 25, 30 m	Length: 10, 12,15, 20, 25, 30 m	Length: 5, 20, 25, 30 m
Width: Incl. fender 5.25m	Width: Incl. fender 6.25m	Width: Incl. fender 8.25m
Width: Excl. fender 5.0m	Width: Excl. fender 6.0m	Width: Excl. fender 8.0m
Height: 1.8m	Height: 1.8m	Height: 1.8m
Weight: 40.0, 45.0, 56.0, 75.0 tons	Weight: 48.0, 51.0, 63.0, 84.0 tons	Weight: 100, 130, 160, 200 tons
Freeboard: Approx. 1.0m	Freeboard: Approx. 1.0m	Freeboard: Approx. 1.0m
Buoyancy: Approx. 970kg/m <sup>2</sup>	Buoyancy: Approx. 970kg/m <sup>2</sup>	Buoyancy: Approx. 970kg/m <sup>2</sup>
Connectors: 2 units type W400 per joint	Connectors: 2 units W400 per joint	Connectors: 2 units W400 per joint
Breaking load: W400: 2x105 tons per joint	Breaking load: W400: 2x105 tons per joint	Breaking load: W400: 2x105 tons per joint

All-concrete pontoons: Concrete: C40/50. Air 6%. Wcr < 0.4. Reinforcement: Nps 500, B 500, Ks 600. Styrofoam: min. 80kPa.  
Cast-in materials: Stainless or hot-dipped galvanised steel. Wood fender: Pressure-treated pine 95 x 145 mm.  
Other dimensions can be offered upon request. We reserve the right to change the design without notifying.